

## Low Voltage Disconnectors

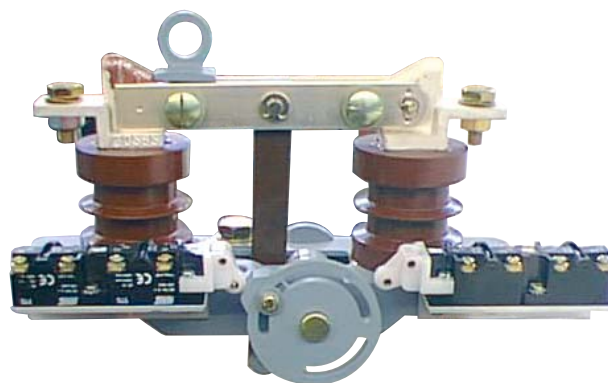
**HAZ Range**

**1 500V Traction Network**

**100 A to 3.15 kA**

**One pole – Switch hook operation**

- Large isolation air and creepage path
- Self-cleaning blade contacts
- True opening and visible distance
- Rugged anti-torsion construction
- Large customisation with :
  - Auxiliary switches, blocking magnets
- According to IEC 62271-102



## Electrical Characteristics

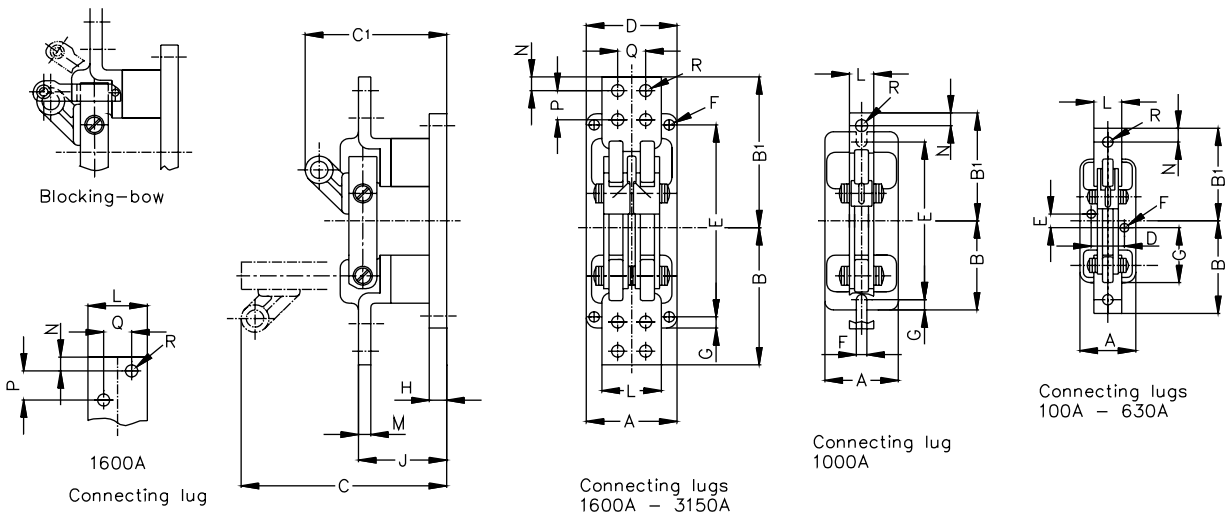
Rated thermal current		RMS 1 sec short-time withstand current (kA)	Rated peak current (kA)
AC (A)	DC (A)		
100	100	22	56
200	200	22	56
400	400	40	100
630	630	40	100
1000	1250	49	123
1600	1900	52	130
2000	2400	57	143
3150	3750	67	168

Nominal Traction Network Voltage (kV)	Dielectric withstand Voltage 1 min/50Hz (kV)	Rated impulse withstand voltage BIL (kV)
1.5	6.5	12

- No-load operation
- Indoor type – only vertical mounting
- Mechanical endurance: <1kA = 50 000 cycles; 1 cycle = open + close
- Maximum temperature withstand at 130° C without damages to the switch
- Electrical contact by contact knives with pressed on hard silver contact rivets and silver-plated
- Small making / breaking capacity (as option)
- Supporting insulators made of cast epoxy resin (fire classification according to UL94-V1)

## Main dimensions

### HAZ 100 - 3 150Amp



Amp AC	A poles	B =B1	C	C1	D	E	Fø	G	H	J	L	M	N	P	Q	Rø	Weight (kg)
100	66	99	175	100				65.5		58	25	4	12.5			9.5	0.9
200																11.5	1.0
400		115			30	25	10.5	77.5	12							11	1.9
630	80	125	205	120						72	30	6	15				2.3
1000	105	139	242	160	-	230	12			98	40	10	20				4.3
1600	112	192	300	185	82			15	25	113	60	12	18	27	27	14	6.8
2000		215	310	200		280	14			125	80	18	20	40	40		11.0
3150	130		330	220	100					130	100				50		15.0

## Switch hooks

Construction : Hard paper with DIN-hooks according to VDE 0681, part 2. Only suitable for dry rooms

Reference number	Length (mm)	Dielectric Withstand voltage (kV)	Weight (kg)
1.021.04	1120	20	0.81
1.021.06	1520	45	0.99
1.021.07	2020	60	1.21

Ferraz Shawmut has it all for defining and offering customized solutions to meet your most specific requirements :

- Adapted drives or control units
- Adapted technical performances