

## Medium Voltage Change-over Disconnectors

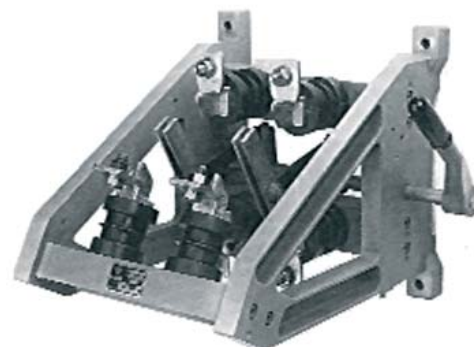
**HUVS Range**

**3.6 kV**

**400 A to 6.3 kA – up to 175 Hz**

**Number of poles : 1, 2, 3, ...**

- Positions 1-2 (1-0-2 on request)
- Large isolation air and creepage path
- Self-cleaning blade contacts
- True opening and visible distance
- Rugged anti-torsion construction
- Large customisation with :
  - Manual, motor, pneumatic drives
  - Auxiliary switches, blocking magnets
- According to IEC 62271-102
- Dimensions Fitting



### Electrical Characteristics

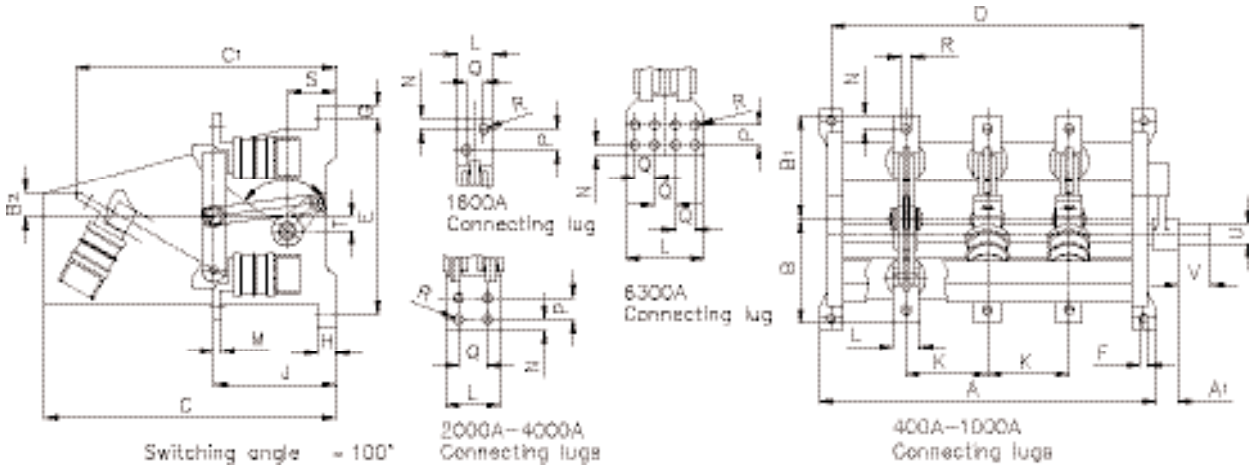
Rated thermal current		RMS 1 sec short-time withstand current	Rated peak current
AC (A)	DC (A)		
400	400	26	65
630	630	26	65
1000	1250	40	100
1600	1900	52	130
2000	2400	63	160
3150	3750	71	177
4000	5300	71	177
6300	7500	81	214

Dielectric withstand voltage 1 min/50 Hz		Rated impulse withstand voltage BIL	
Phase to earth (kV)	Across the isolating distance (kV)	Phase to earth (kV)	Across the isolating distance (kV)
10	12	40	46

- No-load operation
- Indoor type – only vertical mounting
- Mechanical endurance:  $\leq 1\text{ kA} = 25\ 000$  cycles;  $>1\text{ kA} = 50\ 000$  cycles (open / close)
- Maximum temperature withstand at  $130^\circ\text{ C}$  without damages to the switch
- Electrical contact by contact knives with pressed on hard silver contact rivets and silver-plated electrolytic copper plates
- Small making / breaking capacity (on demand)
- Supporting insulators made of cast epoxy resin (fire classification according to UL94-V1)

## Main dimensions

### HUVS 3.6 kV 400-6300 Amp



Amp	No of Poles	A	A1	B	B2	C	C1	D	E	F	G	H	J	K	L	M	N	P	O	R	S	T	U	V	Drive								
400	1	242	15	125	34	410	356	206	296	12	18	28	183	30	6	15			11	73	22	18	60	1B									
630				135	39		366																		25								
1000		30	157	36	435	400	206								296	12	18	28	183	30	40	10	20	-	-	11	73	22	18	60	1B		
1600		370	5	242	54	545	330								300	18	40	30	216	60	12	18	27	27	14	83	36	30	80	2			
2000		440	5	265	72	555	570								400	300	18	40	30	227	80	18	20	40	40	60	18	132	65	35	100	3	
3150					70	575	400								227	100	50																
4000		410		286	80	662	350								350	470	23	30	45	290	120	20		40	60	40	18	132	65	35	100	3	
6300		450		306	90	825	700								390	470	23	30	45	310	160	20		40	60	40	18	132	65	35	100	3	
400		2	367	15	125	34	410								356	331	296	12	18	28	183	30	6	15			11	73	22	18	60	1B	
630					135	39									366																		25
1000	30		157	36	435	400	331	296	12	18	28	189	40	10	20								-	-	11	73	22	18	60	1B			
1600	570		5	242	54	545	530	300	18	40	30	216	60	12	18								27	27	14	83	36	30	80	3			
2000	640		5	265	72	555	570	600	300	18	40	30	227	80	18								20	40	40	50	18	132	65	35	100	4	
3150					70	575	600	227	100	50																							
4000	660			286	80	662	662	662	470	23	30	45	290	250	120								20		40	60	40	18	132	65	35	100	4
6300	750			306	90	825	700	690	470	23	30	45	310	300	160								20		40	60	40	18	132	65	35	100	4
400	3		492	15	125	34	410	356	456	296	12	18	28	183	125								6	15			11	73	22	18	60	1B	
630					135	39		366																									25
1000		30	157	36	435	400	456	296								12	18	28	189	40	10	20	-	-	11	73	22	18	60	1B			
1600		770	5	242	54	545	730	300								18	40	30	216	60	12	18	27	27	14	83	36	30	80	3			
2000		840	5	265	72	555	570	800								300	18	40	30	227	200	18	20	40	40	50	18	132	65	35	100	4	
3150					70	575	800	227								100	50																
4000		910		286	80	662	662	662								470	23	30	45	290	250	120	20		40	60	40	18	132	65	35	100	4
6300		1050		306	90	825	700	990								470	23	30	45	310	300	160	20		40	60	40	18	132	65	35	100	4

Ferraz Shawmut offers customized solutions to meet your most specific requirements:

- Adapted drives or control units
- Technical performance specifications (short-circuit current capability, endurance, small load - make / break capacity)